

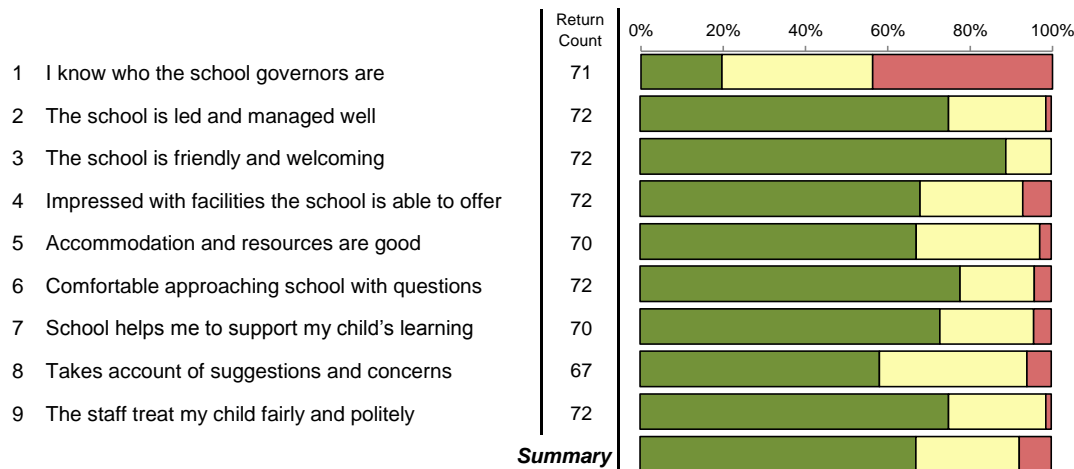
Survey: Parent/Carer Perception of School - November 2017

Report By: **All Respondents**

Difference from: All Respondents  
 Ext. Benchmark: 49,906 parents from 260 primary schools within the 'All Data' QDP national benchmark.  
 Report style: Combined Graphical, Rated, Questionnaire order  
 Filtered by: All Respondents  
 Respondents: 72



**The School and its Ethos**



	Strongly Agree	Agree	Disagree	Strongly Disagree	Not Answered
1	14 19.4%	26 36.1%	21 29.2%	10 13.9%	1 1.4%
2	54 75.0%	17 23.6%	1 1.4%	0 0.0%	0 0.0%
3	64 88.9%	8 11.1%	0 0.0%	0 0.0%	0 0.0%
4	49 68.1%	18 25.0%	4 5.6%	1 1.4%	0 0.0%
5	47 65.3%	21 29.2%	1 1.4%	1 1.4%	2 2.8%
6	56 77.8%	13 18.1%	3 4.2%	0 0.0%	0 0.0%
7	51 70.8%	16 22.2%	2 2.8%	1 1.4%	2 2.8%
8	39 54.2%	24 33.3%	4 5.6%	0 0.0%	5 6.9%
9	54 75.0%	17 23.6%	1 1.4%	0 0.0%	0 0.0%
<b>Summary</b>	428 66.0%	160 24.7%	37 5.7%	13 2.0%	10 1.5%

Rating	Difference	Agree%	Distance Travelled	Quartile	External Benchmark
38		56	-4	B	+4
87		99	-2	A	+10
94		100	=	A	+10
81		93	-6	A	+8
82		97	-9	A	+8
87		96	-3	A	+8
84		96	-5	A	+7
76		94	-6	A	+7
87		99	-3	A	+7
80		92	-4	A	+8

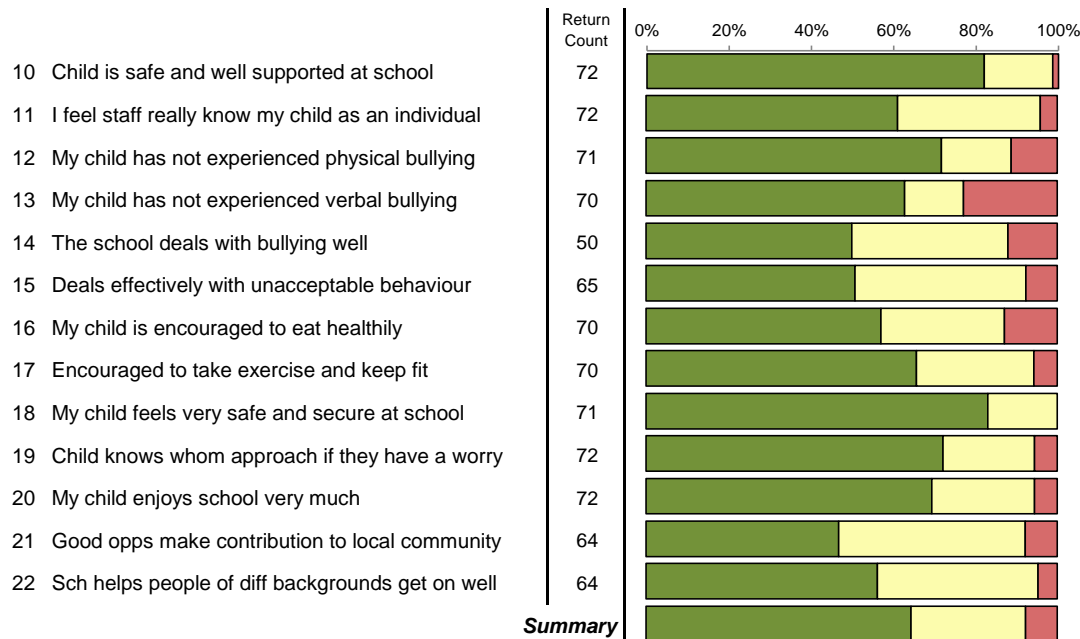
Survey: Parent/Carer Perception of School - November 2017

Report By: All Respondents

Difference from: All Respondents  
 Ext. Benchmark: 49,906 parents from 260 primary schools within the 'All Data' QDP national benchmark.  
 Report style: Combined Graphical, Rated, Questionnaire order  
 Filtered by: All Respondents  
 Respondents: 72



**Wellbeing**



Strongly Agree	Agree	Disagree	Strongly Disagree	Not Answered
59	12	1	0	0
44	25	2	1	0
51	12	4	4	1
44	10	10	6	2
25	19	5	1	22
33	27	4	1	7
40	21	9	0	2
46	20	3	1	2
59	12	0	0	1
52	16	4	0	0
50	18	4	0	0
30	29	5	0	8
36	25	3	0	8
569	246	54	14	53

Rating	Difference	Agree%	Distance Travelled	Quartile	External Benchmark
90		99	-4	A	+7
78		96	-6	B	=
80		89	-5	A	+8
70		77	-4	A	+6
69		88	-10	B	+3
72		92	-7	B	+3
72		87	-9	C	-2
80		94	-2	B	+3
92		100	+4	A	+10
83		94	-2	A	+5
82		94	-5	B	+3
70		92	-4	B	+2
76		95	-4	B	+2
78		92	-4	B	+3

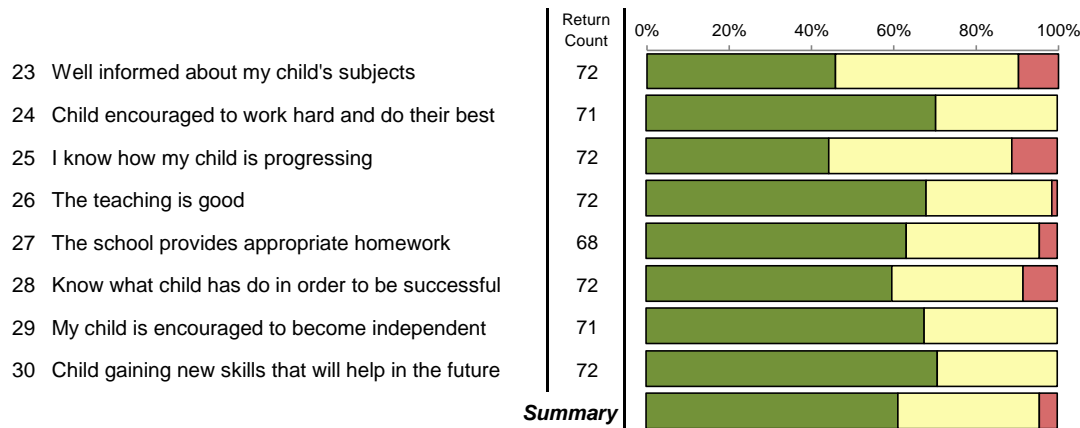
Survey: Parent/Carer Perception of School - November 2017

Report By: **All Respondents**

Difference from: All Respondents  
 Ext. Benchmark: 49,906 parents from 260 primary schools within the 'All Data' QDP national benchmark.  
 Report style: Combined Graphical, Rated, Questionnaire order  
 Filtered by: All Respondents  
 Respondents: 72



**Teaching and Learning**



Strongly Agree	Agree	Disagree	Strongly Disagree	Not Answered
33	32	5	2	0
45.8%	44.4%	6.9%	2.8%	0.0%
50	21	0	0	1
69.4%	29.2%	0.0%	0.0%	1.4%
32	32	8	0	0
44.4%	44.4%	11.1%	0.0%	0.0%
49	22	1	0	0
68.1%	30.6%	1.4%	0.0%	0.0%
43	22	3	0	4
59.7%	30.6%	4.2%	0.0%	5.6%
43	23	5	1	0
59.7%	31.9%	6.9%	1.4%	0.0%
48	23	0	0	1
66.7%	31.9%	0.0%	0.0%	1.4%
51	21	0	0	0
70.8%	29.2%	0.0%	0.0%	0.0%
349	196	22	3	6
60.6%	34.0%	3.8%	0.5%	1.0%

Rating	Difference	Agree%	Distance Travelled	Quartile	External Benchmark
68		90	-9	C	-1
85		100	-8	B	+1
67		89	-15	C	-5
83		99	-6	B	+2
79		96	-5	A	+11
76		92	-6	B	+2
84		100	-3	B	+4
85		100	-2	A	+6
78		96	-7	B	+2

Survey: Parent/Carer Perception of School - November 2017

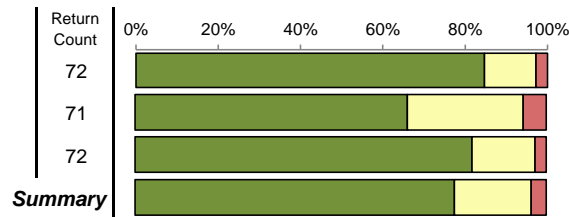
Report By: **All Respondents**

Difference from: All Respondents  
 Ext. Benchmark: 49,906 parents from 260 primary schools within the 'All Data' QDP national benchmark.  
 Report style: Combined Graphical, Rated, Questionnaire order  
 Filtered by: All Respondents  
 Respondents: 72



**Overall Satisfaction**

- 31 I am satisfied with the choice of this school
- 32 My child is making good progress
- 33 I would recommend the school to a friend



	Strongly Agree	Agree	Disagree	Strongly Disagree	Not Answered
31	61	9	1	1	0
32	47	20	3	1	1
33	59	11	1	1	0
<b>Summary</b>	167	40	5	3	1

Rating	Difference	Agree%	Distance Travelled	Quartile	External Benchmark
91		97	-1	A	+9
80		94	-5	B	+1
90		97	-3	A	+9
87		96	-3	B	+6

Survey: Parent/Carer Perception of School - November 2017

Report By: **All Respondents**

Difference from: All Respondents

Ext. Benchmark: 49,906 parents from 260 primary schools within the 'All Data' QDP national benchmark.

Report style: Combined Graphical, Rated, Questionnaire order

Filtered by: All Respondents

Respondents: 72



Ethnicity		
Prefer not to answer	1	1.4%
Black African	0	0.0%
Black Caribbean	0	0.0%
Black Other	0	0.0%
Bangladeshi	0	0.0%
Chinese	0	0.0%
Indian	0	0.0%
Pakistani	0	0.0%
White	69	95.8%
Other	1	1.4%
Not Answered	1	1.4%

Gender		
Male	10	13.9%
Female	62	86.1%
Transgender	0	0.0%
Not Answered	0	0.0%

Do you have a Disability		
Yes	3	4.2%

Do you have a Disability		
No	69	95.8%
Not Answered	0	0.0%

Gender of your child		
Boy	34	47.2%
Girl	37	51.4%
Not Answered	1	1.4%

In which year is your child		
Reception	11	15.3%
Year 1	15	20.8%
Year 2	8	11.1%
Year 3	6	8.3%
Year 4	8	11.1%
Year 5	10	13.9%
Year 6	8	11.1%
Not Answered	6	8.3%

Is your child SEN registered		
Yes	5	6.9%

Survey: Parent/Carer Perception of School - November 2017

Report By: **All Respondents**

Difference from: All Respondents

Ext. Benchmark: 49,906 parents from 260 primary schools within the 'All Data' QDP national benchmark.

Report style: Combined Graphical, Rated, Questionnaire order

Filtered by: All Respondents

Respondents: 72



Is your child SEN registered		
No	56	77.8%
Not Answered	11	15.3%

Survey: Parent/Carer Perception of School - November 2017

Report By: **All Respondents**

Difference from: All Respondents  
 Ext. Benchmark: 49,906 parents from 260 primary schools within the 'All Data' QDP national benchmark.  
 Report style: Combined Graphical, Rated, Questionnaire order  
 Filtered by: All Respondents  
 Respondents: 72



### The School and its Ethos

	Return Count	Strongly Agree	Agree	Disagree	Strongly Disagree	Not Answered	Mean Score	Reverse Mean Score	Agree%
1 I know who the school governors are	71	14	26	21	10	1	2.4	2.6	56
2 The school is led and managed well	72	54	17	1	0	0	1.3	3.7	99
3 The school is friendly and welcoming	72	64	8	0	0	0	1.1	3.9	100
4 Impressed with facilities the school is able to offer	72	49	18	4	1	0	1.4	3.6	93
5 Accommodation and resources are good	70	47	21	1	1	2	1.4	3.6	97
6 Comfortable approaching school with questions	72	56	13	3	0	0	1.3	3.7	96
7 School helps me to support my child's learning	70	51	16	2	1	2	1.3	3.7	96
8 Takes account of suggestions and concerns	67	39	24	4	0	5	1.5	3.5	94
9 The staff treat my child fairly and politely	72	54	17	1	0	0	1.3	3.7	99

### Wellbeing

	Return Count	Strongly Agree	Agree	Disagree	Strongly Disagree	Not Answered	Mean Score	Reverse Mean Score	Agree%
10 Child is safe and well supported at school	72	59	12	1	0	0	1.2	3.8	99
11 I feel staff really know my child as an individual	72	44	25	2	1	0	1.4	3.6	96
12 My child has not experienced physical bullying	71	51	12	4	4	1	1.5	3.5	89
13 My child has not experienced verbal bullying	70	44	10	10	6	2	1.7	3.3	77
14 The school deals with bullying well	50	25	19	5	1	22	1.6	3.4	88
15 Deals effectively with unacceptable behaviour	65	33	27	4	1	7	1.6	3.4	92
16 My child is encouraged to eat healthily	70	40	21	9	0	2	1.6	3.4	87
17 Encouraged to take exercise and keep fit	70	46	20	3	1	2	1.4	3.6	94
18 My child feels very safe and secure at school	71	59	12	0	0	1	1.2	3.8	100
19 Child knows whom approach if they have a worry	72	52	16	4	0	0	1.3	3.7	94

Survey: Parent/Carer Perception of School - November 2017

Report By: **All Respondents**

Difference from: All Respondents

Ext. Benchmark: 49,906 parents from 260 primary schools within the 'All Data' QDP national benchmark.

Report style: Combined Graphical, Rated, Questionnaire order

Filtered by: All Respondents

Respondents: 72



### Wellbeing

	Return Count	Strongly Agree	Agree	Disagree	Strongly Disagree	Not Answered	Mean Score	Reverse Mean Score	Agree%
20 My child enjoys school very much	72	50	18	4	0	0	1.4	3.6	94
21 Good opps make contribution to local community	64	30	29	5	0	8	1.6	3.4	92
22 Sch helps people of diff backgrounds get on well	64	36	25	3	0	8	1.5	3.5	95

### Teaching and Learning

	Return Count	Strongly Agree	Agree	Disagree	Strongly Disagree	Not Answered	Mean Score	Reverse Mean Score	Agree%
23 Well informed about my child's subjects	72	33	32	5	2	0	1.7	3.3	90
24 Child encouraged to work hard and do their best	71	50	21	0	0	1	1.3	3.7	100
25 I know how my child is progressing	72	32	32	8	0	0	1.7	3.3	89
26 The teaching is good	72	49	22	1	0	0	1.3	3.7	99
27 The school provides appropriate homework	68	43	22	3	0	4	1.4	3.6	96
28 Know what child has do in order to be successful	72	43	23	5	1	0	1.5	3.5	92
29 My child is encouraged to become independent	71	48	23	0	0	1	1.3	3.7	100
30 Child gaining new skills that will help in the future	72	51	21	0	0	0	1.3	3.7	100

### Overall Satisfaction

	Return Count	Strongly Agree	Agree	Disagree	Strongly Disagree	Not Answered	Mean Score	Reverse Mean Score	Agree%
31 I am satisfied with the choice of this school	72	61	9	1	1	0	1.2	3.8	97
32 My child is making good progress	71	47	20	3	1	1	1.4	3.6	94
33 I would recommend the school to a friend	72	59	11	1	1	0	1.2	3.8	97