

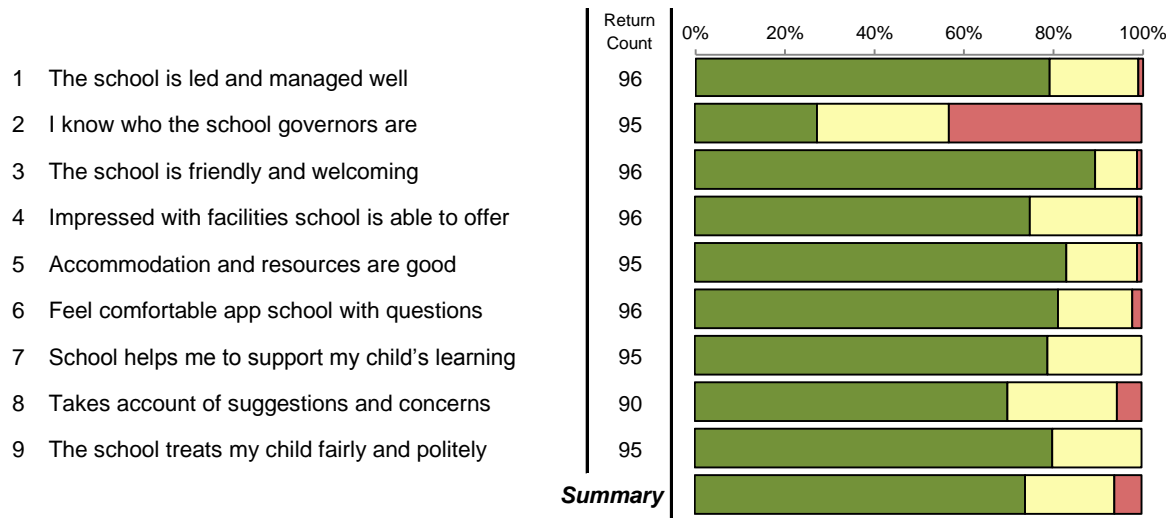
Survey: Parent/Carer Perception of School - December 2016

Report By: **All Respondents**

Difference from: All Respondents
 Ext. Benchmark: 45,425 parents from 262 primary schools within the 'All Data' QDP national benchmark.
 Report style: Combined Graphical, Rated, Questionnaire order
 Filtered by: All Respondents
 Respondents: 96



The School and its Ethos



Strongly Agree	Agree	Disagree	Strongly Disagree	Not Answered
76 79.2%	19 19.8%	1 1.0%	0 0.0%	0 0.0%
26 27.1%	28 29.2%	21 21.9%	20 20.8%	1 1.0%
86 89.6%	9 9.4%	1 1.0%	0 0.0%	0 0.0%
72 75.0%	23 24.0%	1 1.0%	0 0.0%	0 0.0%
79 82.3%	15 15.6%	1 1.0%	0 0.0%	1 1.0%
78 81.3%	16 16.7%	2 2.1%	0 0.0%	0 0.0%
75 78.1%	20 20.8%	0 0.0%	0 0.0%	1 1.0%
63 65.6%	22 22.9%	5 5.2%	0 0.0%	6 6.3%
76 79.2%	19 19.8%	0 0.0%	0 0.0%	1 1.0%
631 73.0%	171 19.8%	32 3.7%	20 2.3%	10 1.2%

Rating	Difference	Agree%	Distance Travelled	Quartile	External Benchmark
89		99	=	A	+13
42		57	+12	A	+8
94		99	=	A	+10
87		99	+1	A	+15
91		99	+2	A	+18
90		98	+3	A	+11
89		100	+2	A	+12
82		94	+3	A	+14
90		100	=	A	+11
84		94	+2	A	+13

Survey:

Parent/Carer Perception of School - December 2016

Report By:

All Respondents

Difference from:

All Respondents

Ext. Benchmark:

45,425 parents from 262 primary schools within the 'All Data' QDP national benchmark.

Report style:

Combined Graphical, Rated, Questionnaire order

Filtered by:

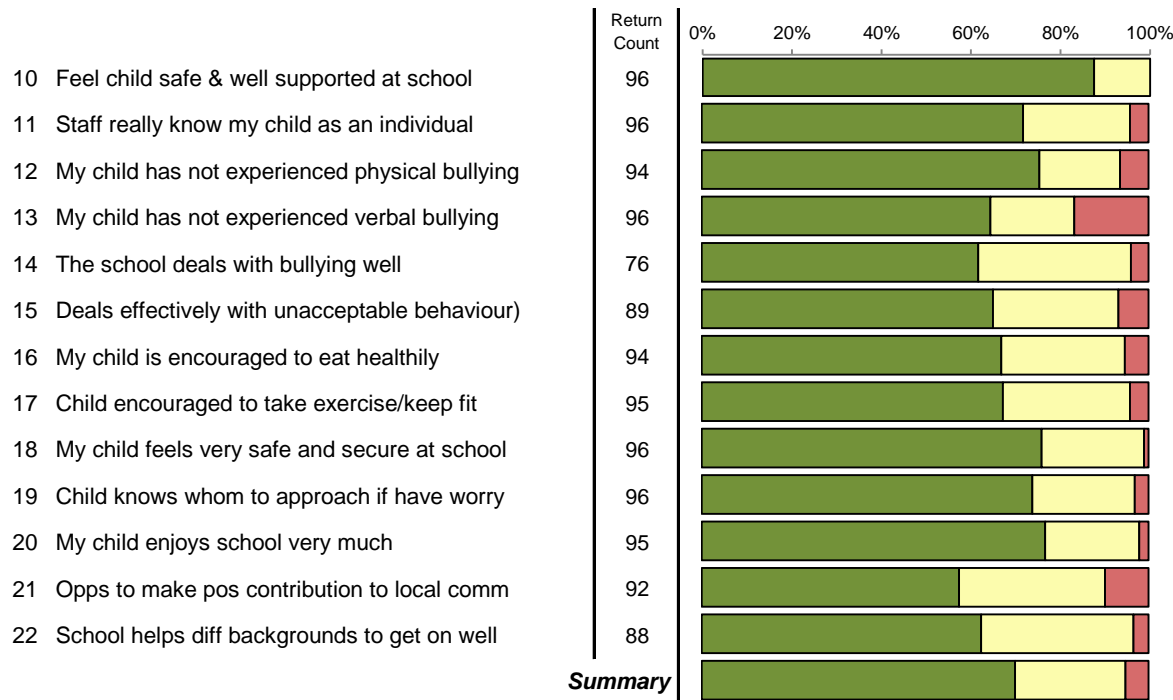
All Respondents

Respondents:

96



Wellbeing



Strongly Agree	Agree	Disagree	Strongly Disagree	Not Answered
84	12	0	0	0
87.5%	12.5%	0.0%	0.0%	0.0%
69	23	4	0	0
71.9%	24.0%	4.2%	0.0%	0.0%
71	17	5	1	2
74.0%	17.7%	5.2%	1.0%	2.1%
62	18	14	2	0
64.6%	18.8%	14.6%	2.1%	0.0%
47	26	3	0	20
49.0%	27.1%	3.1%	0.0%	20.8%
58	25	6	0	7
60.4%	26.0%	6.3%	0.0%	7.3%
63	26	5	0	2
65.6%	27.1%	5.2%	0.0%	2.1%
64	27	4	0	1
66.7%	28.1%	4.2%	0.0%	1.0%
73	22	1	0	0
76.0%	22.9%	1.0%	0.0%	0.0%
71	22	3	0	0
74.0%	22.9%	3.1%	0.0%	0.0%
73	20	1	1	1
76.0%	20.8%	1.0%	1.0%	1.0%
53	30	7	2	4
55.2%	31.3%	7.3%	2.1%	4.2%
55	30	2	1	8
57.3%	31.3%	2.1%	1.0%	8.3%
843	298	55	7	45
67.5%	23.9%	4.4%	0.6%	3.6%

Rating	Difference	Agree%	Distance Travelled	Quartile	External Benchmark
94		100	+3	A	+12
84		96	=	B	+4
85		94	+2	A	+13
74		83	=	A	+10
79		96	+3	A	+13
79		93	-3	A	+10
81		95	+6	A	+7
82		96	+1	B	+5
88		99	-1	A	+6
85		97	-1	A	+8
87		98	+5	A	+8
74		90	=	A	+6
80		97	=	A	+7
82		95	+1	A	+8

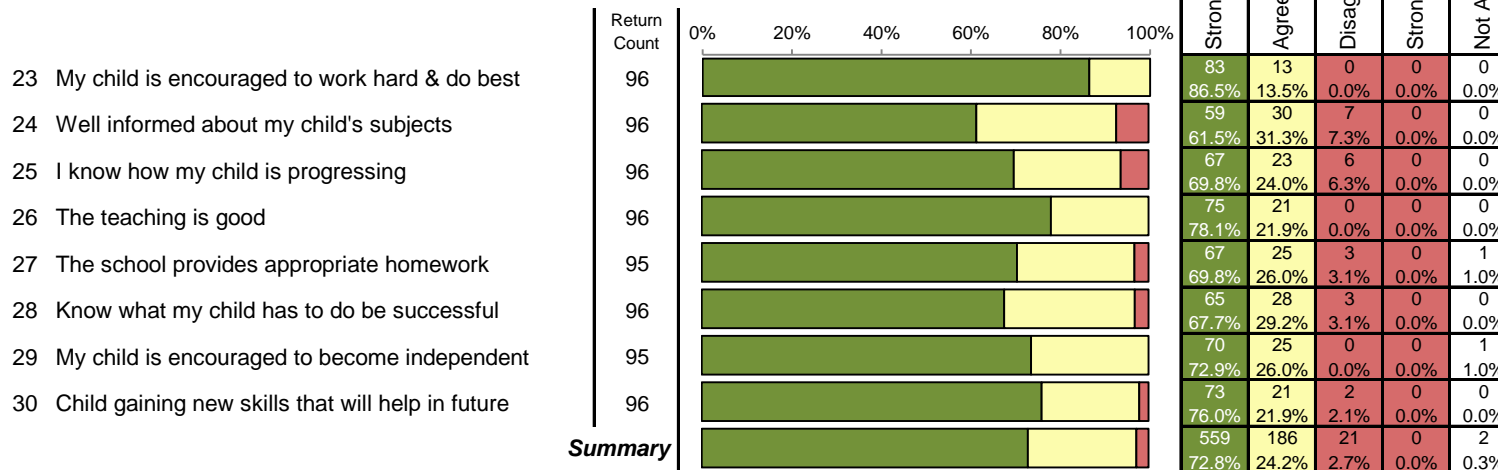
Survey: Parent/Carer Perception of School - December 2016

Report By: **All Respondents**

Difference from: All Respondents
 Ext. Benchmark: 45,425 parents from 262 primary schools within the 'All Data' QDP national benchmark.
 Report style: Combined Graphical, Rated, Questionnaire order
 Filtered by: All Respondents
 Respondents: 96



Teaching and Learning



Rating	Difference	Agree%	Distance Travelled	Quartile	External Benchmark
93		100	+2	A	+10
77		93	+1	A	+8
82		94	+7	A	+10
89		100	=	A	+9
84		97	+5	A	+16
82		97	+1	A	+9
87		100	+1	A	+8
87		98	-1	A	+8
85		97	+2	A	+10

Survey: Parent/Carer Perception of School - December 2016

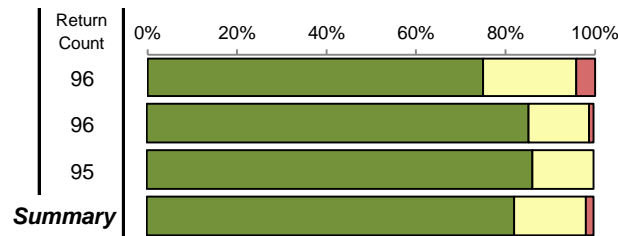
Report By: **All Respondents**

Difference from: All Respondents
 Ext. Benchmark: 45,425 parents from 262 primary schools within the 'All Data' QDP national benchmark.
 Report style: Combined Graphical, Rated, Questionnaire order
 Filtered by: All Respondents
 Respondents: 96



Overall Satisfaction

- 31 My child is making good progress
- 32 I am satisfied with the choice of this school
- 33 I would recommend the school to a friend



	Strongly Agree	Agree	Disagree	Strongly Disagree	Not Answered
31 My child is making good progress	72 75.0%	20 20.8%	4 4.2%	0 0.0%	0 0.0%
32 I am satisfied with the choice of this school	82 85.4%	13 13.5%	1 1.0%	0 0.0%	0 0.0%
33 I would recommend the school to a friend	82 85.4%	13 13.5%	0 0.0%	0 0.0%	1 1.0%
Summary	236 81.9%	46 16.0%	5 1.7%	0 0.0%	1 0.3%

Rating	Difference	Agree%	Distance Travelled	Quartile	External Benchmark
85		96	-1	A	+6
92		99	+1	A	+10
93		100	+2	A	+12
90		98	+1	A	+9

Survey: Parent/Carer Perception of School - December 2016

Report By: **All Respondents**

Difference from: All Respondents

Ext. Benchmark: 45,425 parents from 262 primary schools within the 'All Data' QDP national benchmark.

Report style: Combined Graphical, Rated, Questionnaire order

Filtered by: All Respondents

Respondents: 96



Gender of Parent/Carer		
Male	11	11.5%
Female	82	85.4%
Transgender	0	0.0%

Ethnicity		
Prefer not to answer	1	1.0%
Black African	0	0.0%
Black Caribbean	0	0.0%
Black other	0	0.0%
Bangladeshi	0	0.0%
Chinese	0	0.0%
Indian	0	0.0%
Pakistani	0	0.0%
White	91	94.8%
Other	1	1.0%

Do you have a Disability		
Disability - Yes	2	2.1%
No	87	90.6%

Gender of Your Child		
Boy	44	45.8%
Girl	48	50.0%

In which Year is your child		
Reception	20	20.8%
Year 1	19	19.8%
Year 2	14	14.6%
Year 3	8	8.3%
Year 4	5	5.2%
Year 5	11	11.5%
Year 6	9	9.4%

Is your child SEN registered		
Is your child SEN registered - Yes	7	7.3%

Survey: Parent/Carer Perception of School - December 2016

Report By: **All Respondents**

Difference from: All Respondents
 Ext. Benchmark: 45,425 parents from 262 primary schools within the 'All Data' QDP national benchmark.
 Report style: Combined Graphical, Rated, Questionnaire order
 Filtered by: All Respondents
 Respondents: 96



The School and its Ethos

	Return Count	Strongly Agree	Agree	Disagree	Strongly Disagree	Not Answered	Mean Score	Reverse Mean Score	Agree%
1 The school is led and managed well	96	76	19	1	0	0	1.2	3.8	99
2 I know who the school governors are	95	26	28	21	20	1	2.4	2.6	57
3 The school is friendly and welcoming	96	86	9	1	0	0	1.1	3.9	99
4 Impressed with facilities school is able to offer	96	72	23	1	0	0	1.3	3.7	99
5 Accommodation and resources are good	95	79	15	1	0	1	1.2	3.8	99
6 Feel comfortable app school with questions	96	78	16	2	0	0	1.2	3.8	98
7 School helps me to support my child's learning	95	75	20	0	0	1	1.2	3.8	100
8 Takes account of suggestions and concerns	90	63	22	5	0	6	1.4	3.6	94
9 The school treats my child fairly and politely	95	76	19	0	0	1	1.2	3.8	100

Wellbeing

	Return Count	Strongly Agree	Agree	Disagree	Strongly Disagree	Not Answered	Mean Score	Reverse Mean Score	Agree%
10 Feel child safe & well supported at school	96	84	12	0	0	0	1.1	3.9	100
11 Staff really know my child as an individual	96	69	23	4	0	0	1.3	3.7	96
12 My child has not experienced physical bullying	94	71	17	5	1	2	1.3	3.7	94
13 My child has not experienced verbal bullying	96	62	18	14	2	0	1.5	3.5	83
14 The school deals with bullying well	76	47	26	3	0	20	1.4	3.6	96
15 Deals effectively with unacceptable behaviour)	89	58	25	6	0	7	1.4	3.6	93
16 My child is encouraged to eat healthily	94	63	26	5	0	2	1.4	3.6	95
17 Child encouraged to take exercise/keep fit	95	64	27	4	0	1	1.4	3.6	96
18 My child feels very safe and secure at school	96	73	22	1	0	0	1.3	3.8	99
19 Child knows whom to approach if have worry	96	71	22	3	0	0	1.3	3.7	97

Survey: Parent/Carer Perception of School - December 2016

Report By: **All Respondents**

Difference from: All Respondents
 Ext. Benchmark: 45,425 parents from 262 primary schools within the 'All Data' QDP national benchmark.
 Report style: Combined Graphical, Rated, Questionnaire order
 Filtered by: All Respondents
 Respondents: 96



Wellbeing

	Return Count	Strongly Agree	Agree	Disagree	Strongly Disagree	Not Answered	Mean Score	Reverse Mean Score	Agree%
20 My child enjoys school very much	95	73	20	1	1	1	1.3	3.7	98
21 Opps to make pos contribution to local comm	92	53	30	7	2	4	1.5	3.5	90
22 School helps diff backgrounds to get on well	88	55	30	2	1	8	1.4	3.6	97

Teaching and Learning

	Return Count	Strongly Agree	Agree	Disagree	Strongly Disagree	Not Answered	Mean Score	Reverse Mean Score	Agree%
23 My child is encouraged to work hard & do best	96	83	13	0	0	0	1.1	3.9	100
24 Well informed about my child's subjects	96	59	30	7	0	0	1.5	3.5	93
25 I know how my child is progressing	96	67	23	6	0	0	1.4	3.6	94
26 The teaching is good	96	75	21	0	0	0	1.2	3.8	100
27 The school provides appropriate homework	95	67	25	3	0	1	1.3	3.7	97
28 Know what my child has to do be successful	96	65	28	3	0	0	1.4	3.6	97
29 My child is encouraged to become independent	95	70	25	0	0	1	1.3	3.7	100
30 Child gaining new skills that will help in future	96	73	21	2	0	0	1.3	3.7	98

Overall Satisfaction

	Return Count	Strongly Agree	Agree	Disagree	Strongly Disagree	Not Answered	Mean Score	Reverse Mean Score	Agree%
31 My child is making good progress	96	72	20	4	0	0	1.3	3.7	96
32 I am satisfied with the choice of this school	96	82	13	1	0	0	1.2	3.8	99
33 I would recommend the school to a friend	95	82	13	0	0	1	1.1	3.9	100